



NOAA Strategic Priorities

Dr. Tim Petty

Assistant Secretary of Commerce for Oceans and Atmosphere

OEAB 29th Meeting, March 18, 2026

NOAA Strategic Priorities



1

Modernizing
Operations,
Planning, Assets



2

Unleashing the
American Ocean
Economy



3

Leading the World
in Numerical
Weather Prediction



4

Transforming and
Modernizing Public
Safety Information

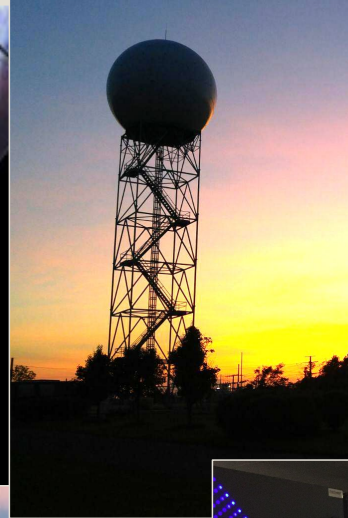
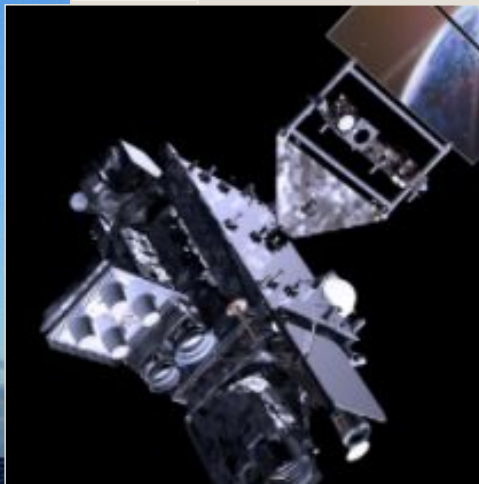


5

Innovation
NOAA Observing
Systems

NOAA-wide effort: from data acquisition to product delivery





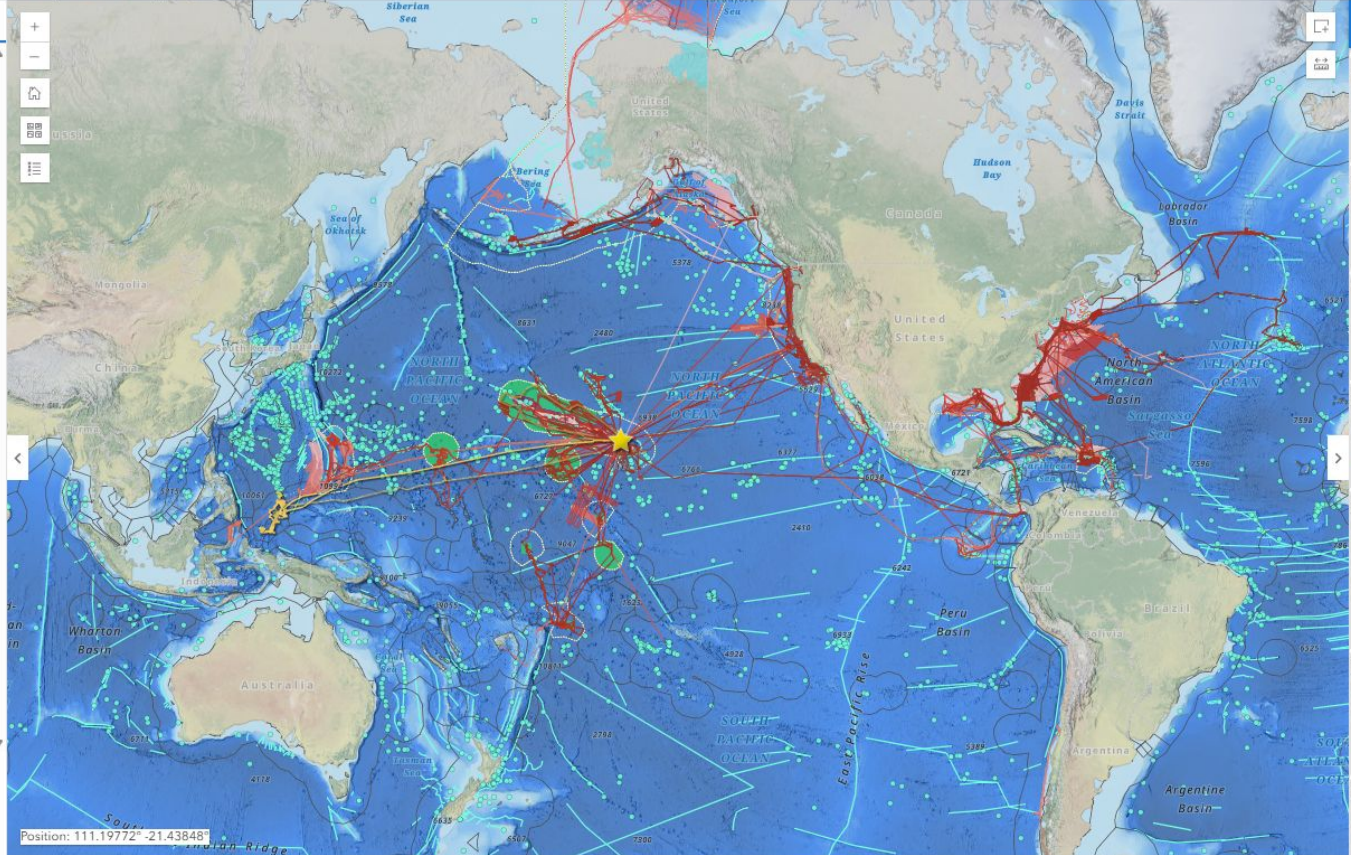
ARTIFICIAL INTELLIGENCE





FILTERS LAYER LIST

- Operational Layers
 - Okeanos Explorer Near-Real Time Updates
 - Latest Okeanos Explorer Position ...
 - Current/Recent Okeanos Explorer Ship Tracks ...
 - ROV Dive Layers
 - Data Access Layers (tracklines and points)
 - Okeanos Explorer Bathymetric Coverage ...
- Reference Layers
 - Maritime Boundaries
 - GEBCO Undersea Feature Names Gazetteer
 - United States Bathymetry Gap Analysis ...
 - NOAA Marine Protected Areas Inventory 2024 ...
 - Bathymetric Grids Layers
 - Okeanos Explorer Bathymetric Grids Layers
 - NCEI Multibeam Bathymetry Mosaic ...



499 Expeditions Displayed	RESET FILTER
2025 EX2507 Beyond the Blue: Palau Mapping 3	SHOW ON MAP
2025 EX2506 Beyond the Blue: Palau Mapping 2	SHOW ON MAP
2025 EX2505 Beyond the Blue: Palau Mapping 1	SHOW ON MAP
2025 EX2504 Beyond the Blue: Transit Mapping	SHOW ON MAP
2025 EX2503 Okeanos Explorer (EX2503): Beyond the Blue: Papahānaumokuākea ROV and Mapping	SHOW ON MAP
2025 EX2502 Okeanos Explorer (EX2502): 2025 ROV and Mapping Shakedown	SHOW ON MAP
2024 EX2501 Okeanos Explorer (EX2501): Beyond the Blue: Papahānaumokuākea Mapping 3	SHOW ON MAP

Esri, TomTom, FAO, NOAA, USGS | General Bathymetric Chart of the Oceans (GEBCO); NOAA National Centers for Environmental Information (NCEI) | NOAA Ocean Exploration; NOAA National Centers for Environmental Information (NCEI) | NOAA ... Powered by Esri

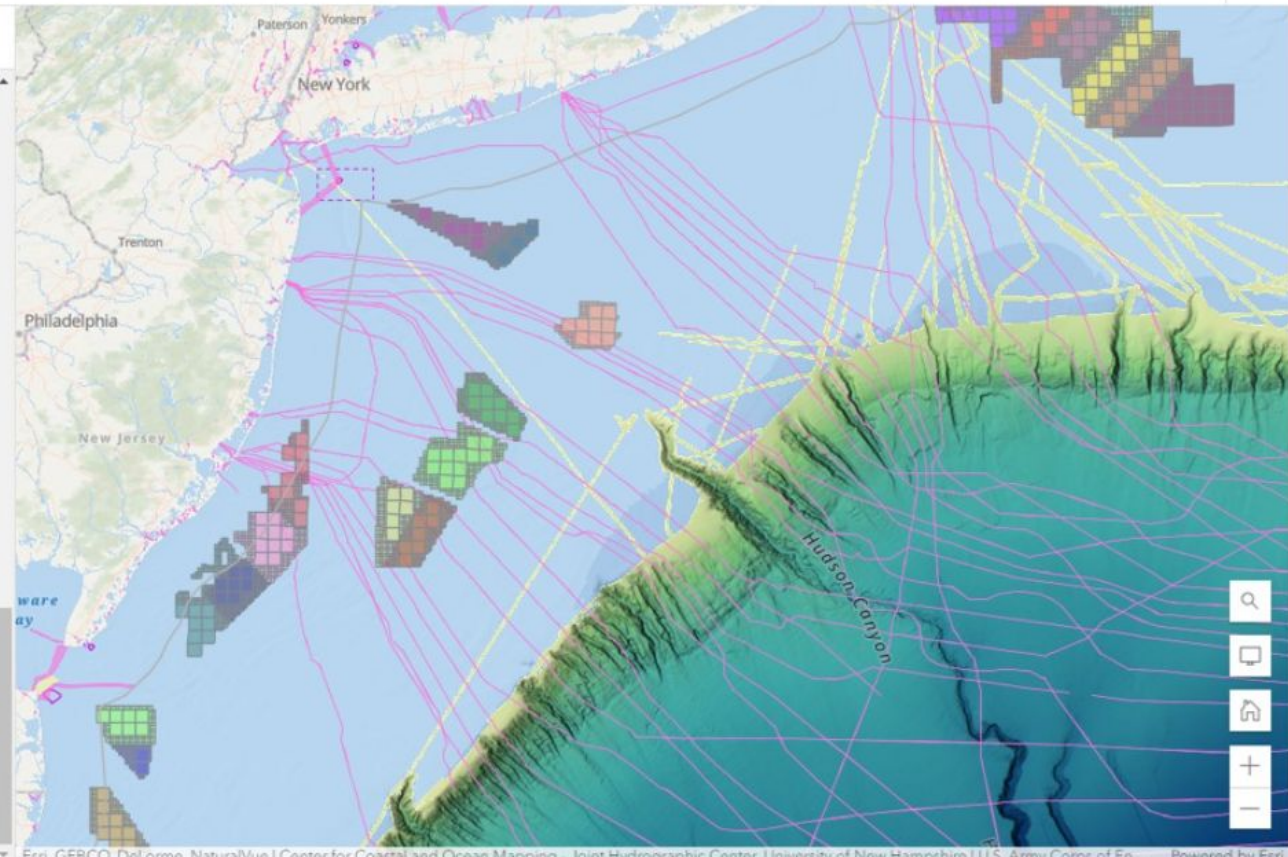


- + Add
- Layers
- Tables
- Basemap
- Charts
- Legend
- Bookmarks
- Save and open
- Map properties
- Share map
- More
- Information
- << Collapse

Layers

- Coastal Barrier Resource System
- National Estuarine Research Reserve System
- BOEM Block Aliquot
- Economy
- Ocean Uses
- Offshore Infrastructure
- Marine Transportation
- Marine Life
- Oceanography
- Benthic

+ Add



Esri, GEBCO, DeLorme, NaturalVue | Center for Coastal and Ocean Mapping - Joint Hydrographic Center, University of New Hampshire | U.S. Army Corps of En... Powered by Esri



Ocean Exploration:

FY24: \$46M

FY25: \$46M (+\$2M project bonus)

FY27: \$47M?



Value of Advisory Committees



**Expert
Guidance**



**Public
Participation**



Transparency



**Balanced
Perspectives**



QUESTIONS?

